

COMMERCIAL LIGHTING SOLUTIONS



ENERGY EFFICIENCY & COST SAVINGS

PROBLEM:

Traditional lighting wastes energy (e.g., lights left on in empty rooms)



**30-60%
REDUCTION
IN ENERGY
BILLS**

SOLUTION:



MOTION SENSORS
(turns off when no one is present)



DAYLIGHT HARVESTING
(adjusts brightness based on natural light)



SCHEDULED AUTOMATION
(e.g., lights off after business hours)



ENHANCED CONVENIENCE & AUTOMATION

PROBLEM:

Manual switching is inefficient (e.g. forgetting to turn off lights)

SOLUTION:

VOICE CONTROL

(Google Home, Alexa, Siri)

APP-BASED

REMOTE CONTROL

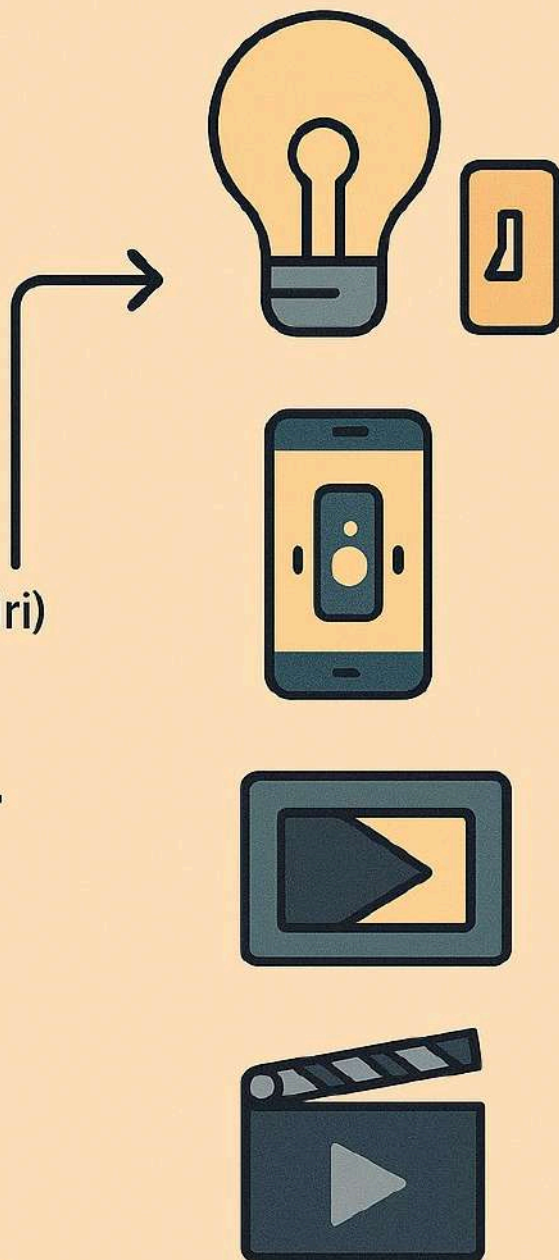
(turn lights on/off from anywhere)

GEOFENCING

(lights turn on when you arrive home)

SCENE SETTING

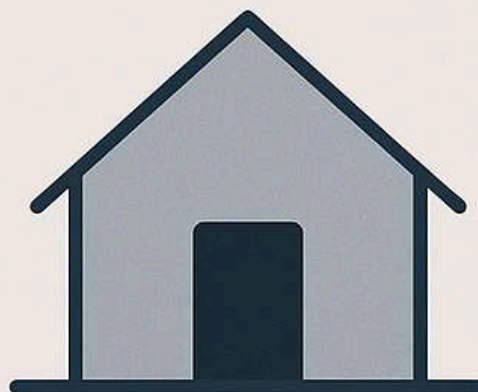
(e.g., "Movie Mode" dims lights automatically)



Improved Safety & Security

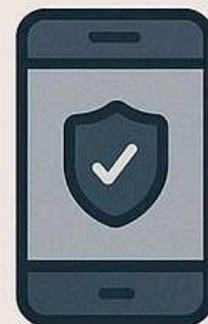
Problem:

Dark spaces increase theft/accident risks.



Solution:

- Motion-activated lights deter intruders
- Vacation mode (randomized lighting to simulate occupancy)
- Emergency lighting (auto-on during power outages)



HEALTH & WELL-BEING BENEFITS

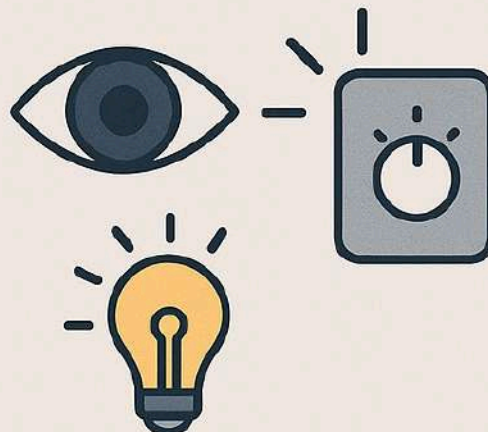
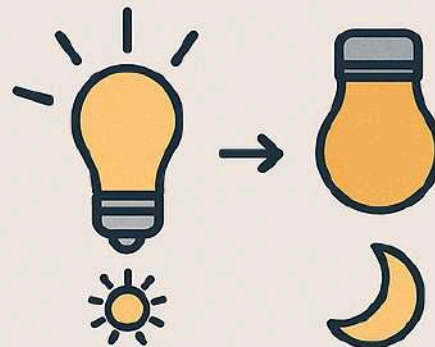
Problem:

Poor lighting affects sleep, mood, and productivity.



Solution:

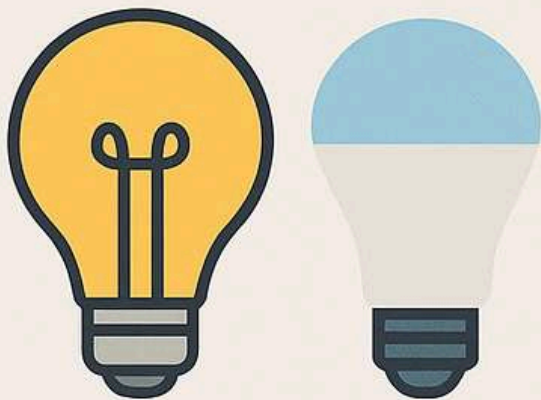
- Circadian lighting (adjusts color temperature: cool white in morning, warm at night)
- Flicker-free LEDs reduce eye strain and headaches
- Personalized brightness for comfort



LONG-TERM MAINTENANCE REDUCTION

Problem:

Traditional bulbs burn out quickly, requiring frequent replacements.



Predictive maintenance alerts (notify when a bulb is failing)

Solution:

Smart LEDs last 50,000+ hours (vs. 1,000–10,000 for incandescent/CFL).



Scener-isce (e.g. 'Movie: Mode' dims lights automatically)



COMPLIANCE WITH GREEN BUILDING STANDARDS

Problem:

Failing to meet energy / regulations (e.g., LEED, BREEAM)



Solution:

Smart lighting helps achieve green certifications

Supports net-zero energy goals

DATA-DRIVEN INSIGHTS & SMART BUILDING INTEGRATION

Problem:

No visibility into energy usage patterns.



Occupancy analytics (helps optimize space usage in offices/stores)

Solution:

Energy monitoring (track usage via app)

Integration with HVAC & security systems (e.g., lights adjust when AC turns on)

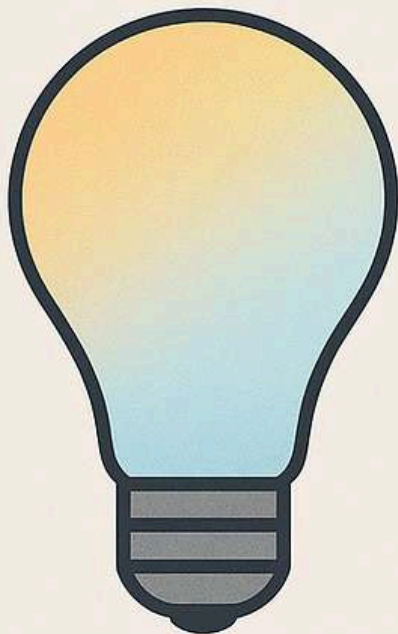
Occupancy analytics (helps optimize space usage in offices/stores)



CUSTOMIZATION & FUTURE-PROOFING

Problem:

Fixed lighting can't adapt to changing needs.



Solution:

Tunable white lights
(adjust color temperature)

Scalable systems
(add more sensors/
lights easily)

Firmware updates
(keeps system
up-to-date)



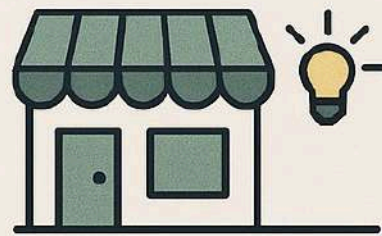
COMMERCIAL SMART LIGHTING APPLICATIONS

Office Buildings



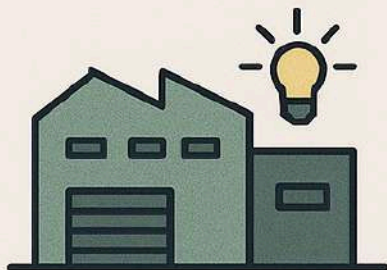
Automated lighting controls for workspaces and meeting rooms

Retail and Hospitality



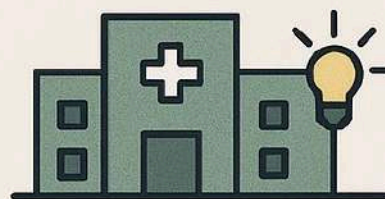
Dynamic lighting scenes for stores, restaurants, and hotels

Warehousing and Industrial Facilities



High-efficiency lighting for large spaces and work areas

Healthcare and Educational Institutions

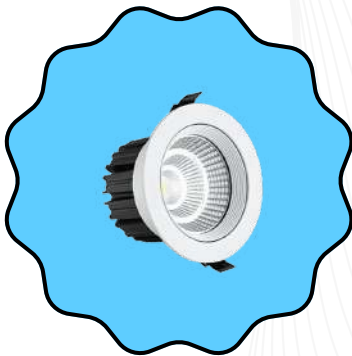


Circadian lighting systems to support well-being and focus



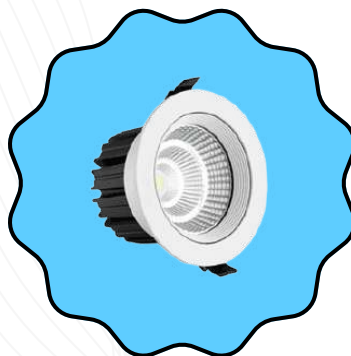
GLOLED SPOT LIGHTS

- GLOLED Spot Lights and Zoom Lights (Gimbal) offer precision-focused, high-intensity illumination ideal for showcasing products and creating dramatic lighting effects. Available in wattages ranging from 3W to 60W, these lights provide exceptional versatility. Crafted using premium aluminum and ADC12 material, they ensure robustness, excellent heat dissipation, and longevity. Featuring adjustable tilt angles from $\pm 30^\circ$ to $\pm 90^\circ$, GLOLED spotlights deliver targeted, directional lighting precisely where needed. Available body colors include silver, white, and black, exclusively in concealed installation designs.
-
- Color temperature options include Warm White, Cool White, Natural White, 3-in-1 multi-color, and tunable variants, perfectly suited for diverse ambiance requirements.
-



LED SPOT LIGHT - **15W**

• Code - 15WCOSPWBCW00



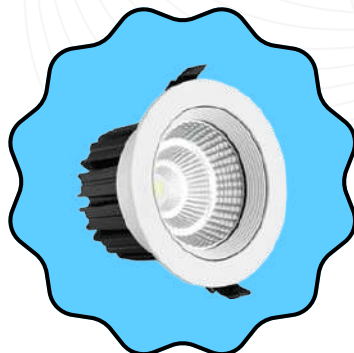
LED SPOT LIGHT - **20W**

• Code - 20WCOSPWBCW00



LED SPOT LIGHT - **25W**

• Code - 25WCOSPWBCW00



LED SPOT LIGHT - **30W**

• Code - 30WCOSPWBCW00



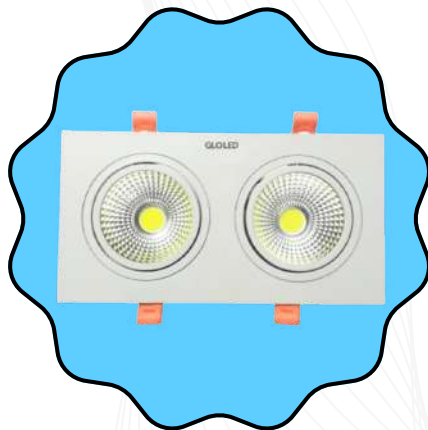
LED SPOT LIGHT - **50W**

• Code - 50WCOSPWBCW00

- - Garment Shops: 15W to 60W (highlighting clothing displays)
- - Jewellery Shops: 25W to 60W (warm colors for optimal brilliance)
- - Function Halls: 3W, 25W, 30W, 50W (focused lighting to accentuate décor)
- - IT Industry: 30W, 50W, 60W (optimal illumination for precision tasks)
- - Corporate Offices: 15W to 60W (focused lighting for workspaces)



GLOLED Spot Lights and Zoom Lights (Gimbal) offer exceptional quality, enhanced brightness, and precise directional control, significantly reducing energy consumption compared to conventional slim panels. Choose GLOLED for superior aesthetics, affordable pricing, reliable performance, and long-lasting support.



LED TWIN SPOT LIGHT - **18W**
• Code - 18WTWSPWBCW00



LED GIMBLE TWIN SPOT
LIGHT - **40W**
• Code - 40WTWSPBBCW00

Why GLOLED Spot Lights?

- - High Lumens Output: Superior brightness compared to market standards
- - High CRI (≥ 90): Produces vivid, photogenic, and natural color rendering
- - Energy Efficiency: Consumes significantly less power compared to traditional slim panels
- - Cost-Effective: Competitive pricing with superior quality
- - Adjustable Angles: Flexible $\pm 30^\circ$ to $\pm 90^\circ$ tilt angle for precise illumination
- - Robust and Durable: Premium aluminum and ADC12 materials ensure durability
- - Warranty & Repairability: Comprehensive 2-year warranty and post-warranty repair services available
-



Linear Profile 50x70mm
Length - 4ft - 12ft



Swasthik Profile
All Sizes Available



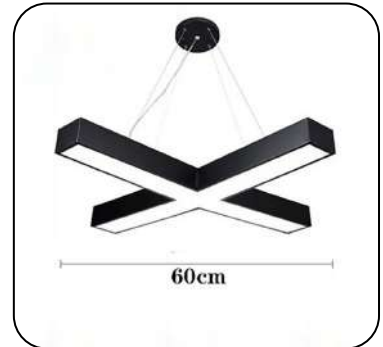
Hexagonal Profile 50x70mm
All Sizes Available



Square Profile 50x37mm
All Sizes Available



Ring Profile 50x70mm
All Sizes Available



Cross Profile 50x70mm
All Sizes Available



L shape Profile 50x70mm
All Sizes Available



Square Profile 50x70mm
All Sizes Available



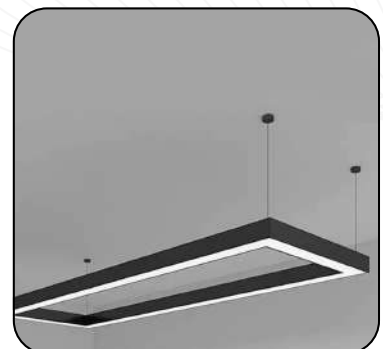
Gear Profile 50x70mm
All Sizes Available



Triangle Profile 50x70mm
All Sizes Available



Y + Profile 50x70mm
All Sizes Available

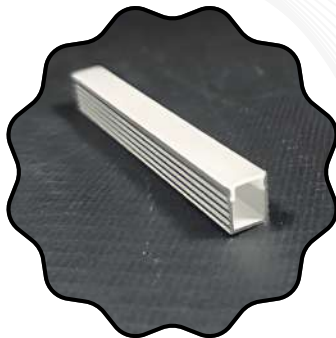


Rectangular Profile 50x70mm
All Sizes Available



ALUMINIUM PROFILE LIGHTS

- ✓ **Available Sizes:** 7x9mm, 8x12mm, 10x12mm, 16x12mm, 16x16mm, and more.
- ✓ **Additional Options:** 17x6mm, 17x15mm, 23x12mm, 25x13mm, 35x12mm, 35x37mm.
- ✓ **Larger Profiles:** 50x12mm, 50x35mm, 50x70mm, 75x35mm.
- ✓ **Types:** Concealed and Recessed for seamless lighting.
- ✓ **Body Colors:** Black, White, Wood, Marble, and **customized options** as per client preference.



7X9MM ALUMINUM PROFILE (SURFACE)

- Code - ALPR7X9SU00
- Dimension - 7 x 9 Surface
- Width: 7 mm Height: 9 mm



7X9MM ALUMINUM PROFILE (EDGE)

- Code - ALPR7X9RE00
- Dimension - 7 x 9 Concealed
- Width: 7 mm Height: 9 mm
- Outer Width: 10 mm



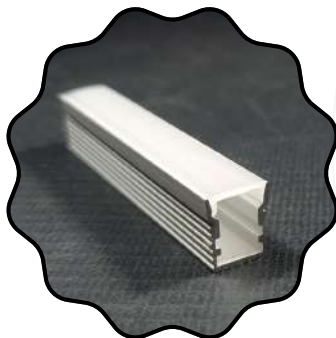
17X6MM ALUMINUM PROFILE (SURFACE)

- Code - ALPR17X6SU00
- Dimension - 8 x 6 Surface
- Width: 18 mm Height: 6 mm



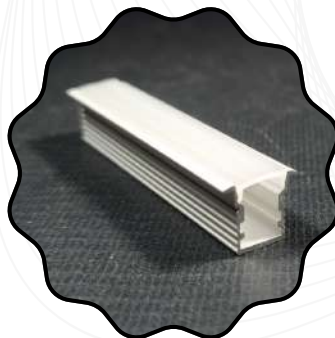
17X6MM ALUMINUM PROFILE (EDGE)

- Code - ALPR17X6RE00
- Dimension - 18 x 6 Concealed
- Width: 18 mm Height: 6 mm
- Outer Width: 22 mm



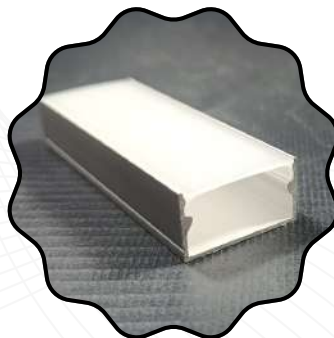
10X12MM ALUMINUM PROFILE (SURFACE)

- Code - ALPR10X12SU00
- Dimension - 10 x 12 Surface
- Width: 10 mm Height: 12 mm



10X12MM ALUMINUM PROFILE (EDGE)

- Code - ALPR10X12RE00
- Dimension - 10 x 12 Concealed
- Width: 10 mm Height: 12.5 mm
- Outer Width: 14.5 mm
- Inner Width: 8.5 mm



25X12MM ALUMINUM PROFILE (SURFACE)

- Code - ALPR25X12SU00
- Dimension - 8 inch



25X12MM ALUMINUM PROFILE (EDGE)

- Code - ALPR25X12RE00
- Dimension - 8 inch



16X16MM ALUMINUM PROFILE (CORNER)

- Code - ALPR16X16SU00
- Dimension - 16 x 16 Corner
- Surface Width: 15.80 mm
- Height: 15.80 mm

Applications

- ✓ 7x9mm, 8x12mm, 10x12mm – Ideal for ambient lighting in smaller spaces like cabinets, wardrobes, and shelves.
- ✓ 16x12mm, 16x16mm – Perfect for accent lighting in living rooms, corridors, and kitchen areas.
- ✓ 17x6mm, 17x15mm, 23x12mm – Best for architectural lighting and wall-mounted installations in offices, retail spaces, and commercial environments.
- ✓ 25x13mm, 35x12mm – Suitable for general lighting in offices, hotels, and conference rooms with medium to large-sized spaces.
- ✓ 50x12mm, 50x35mm, 50x70mm, 75x35mm – Ideal for high-intensity lighting in large halls, auditoriums, and showrooms, offering powerful illumination over larger areas.



35X12MM ALUMINUM PROFILE (SURFACE)

- Code - ALPR35X12SU00
- Dimension - 35 x 12 Surface
Inner Width: 35 mm
Height: 12 mm



35X12MM ALUMINUM PROFILE (EDGE)

- Code - ALPR35X12RE00
- Dimension - 35 x 12 Concealed
Outer Width: 42 mm Inner
Width: 35 mm Height: 12 mm



50X12MM ALUMINUM PROFILE (SURFACE)

- Code - ALPR50X12SU00
- Dimension - 50 x 12 Surface
Inner Width: 50 mm
Height: 12 mm



50X12MM ALUMINUM PROFILE (EDGE)

- Code - ALPR52X12RE00
- Dimension - 50 x 12 Concealed
Outer Width: 57 mm Inner
Width: 50 mm Height: 12 mm



75X35MM ALUMINUM PROFILE (SURFACE)

- Code - ALPR75X35SU00
- Dimension - 8 inch



75X35MM ALUMINUM PROFILE (EDGE)

- Code - ALPR75X35RE00
- Dimension - 75 x 35 Concealed
Outer Width: 85 mm Inner
Width: 75 mm Height: 35 mm



32X70MM HANGING ALUMINUM PROFILE

- Code - ALPR32X70SU00
- Dimension - 8 inch



50X80MM HANGING ALUMINUM PROFILE

- Code - ALPR50X80SU00
- Dimension - 8 inch

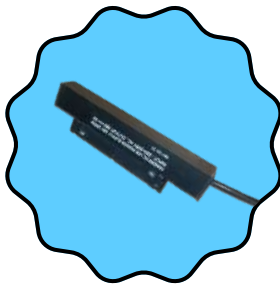
Why GLO LED for Profile Lights?

- ✓ **Wide Range of Sizes** – GLO LED offers an extensive variety of profile light sizes, from compact to large, ensuring a perfect fit for any space or application.
- ✓ **Premium Quality** – GLO LED profile lights are made from high-quality materials, ensuring durability, longevity, and optimal performance in any environment.
- ✓ **Energy-Efficient** – Designed to provide maximum brightness with minimal energy consumption, GLO LED profile lights reduce electricity costs while delivering powerful illumination.
- ✓ **Versatile Applications** – Whether for ambient lighting, accent lighting, or architectural installations, GLO LED offers flexible solutions for homes, offices, retail spaces, and more.
- ✓ **Sleek and Modern Designs** – The minimalist and sleek designs of GLO LED profile lights complement contemporary interiors and enhance the aesthetics of any space.
- ✓ **Customizable Options** – With various colour temperatures, dimmable options, and different reflectors, GLO LED profile lights can be tailored to meet specific lighting needs and preferences.



MAGNETIC TRACK LIGHTS

- ✓ Track Width: 26mm available in 1m, 2m, and 3m lengths.
- ✓ Mounting Types: Surface, Hanging, Concealed for versatile installations.
- ✓ Color Options: Black for a sleek, modern look.
- ✓ Lighting Options:
 - Linear Lights: 12W, 18W, 24W, 36W
 - Grill Type: 12W, 8W
 - Spotlights: Linear Spot & Track Lights
 - Decorative Hanging Lights for premium aesthetics.
 - ✓ Light Colors: Cool White, Warm White, Natural White for different ambiance needs.
 - ✓ Horizontal & Vertical Jointers for seamless customization and design flexibility.



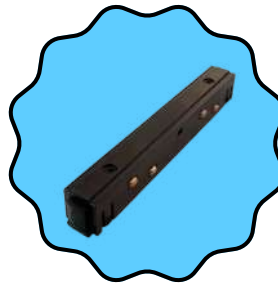
MAGNETIC 48V DRIVER
100W

• Code - MADR100W48V00



MAGNETIC 48V DRIVER
200W

• Code - MADR200W48V00



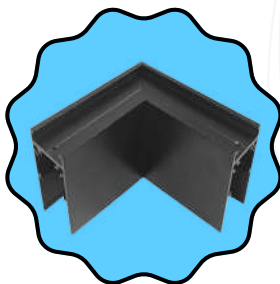
MAGNETIC DC
CONNECTOR (I)

• Code - MACOI00



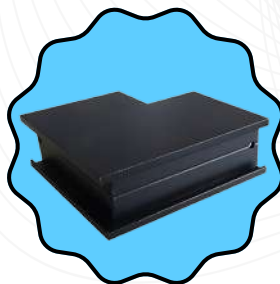
MAGNETIC DC
CONNECTOR (L)

• Code - MACOL00



MAGNETIC HORIZONTAL
CORNER SURFACE

• Code - MAHCS00



MAGNETIC VERTICAL
CORNER SURFACE

• Code - MAVCS00



MAGNETIC LASER
LIGHT 6W

• Code - 6WMALACW00



MAGNETIC LASER
LIGHT 12W

• Code - 12WMATRICW00

Applications

- ✓ Halls / Bedrooms: Track lights, linear lights, grill adjustable lights, linear spotlights, and hanging cylinder lights – Ideal for modern, stylish illumination.
- ✓ Kitchens: Decorative hanging lights – Enhances aesthetics while providing functional lighting.
- ✓ Versatile & Innovative Lighting:
 - ✓ Blends practicality with modern innovation for customizable setups.
 - ✓ Enhances both functionality and ambiance across residential and commercial spaces.
 - ✓ Ideal for task lighting, decor, and temporary installations due to its flexibility.
 - ✓ Easy-to-install modular system allows seamless lighting adjustments.





**MAGNETIC LASER
LIGHT 20W**

• Code - 20WMALACW00



**MAGNETIC LINEAR ADJUSTABLE
SPOT LIGHT 6W**

• Code - 6WMALAADCW00



**MAGNETIC LINEAR
ADJUSTABLE SPOT LIGHT 12W**

• Code - 12WMALIADCW00



**MAGNETIC LINEAR
SPOT LIGHT 6W**

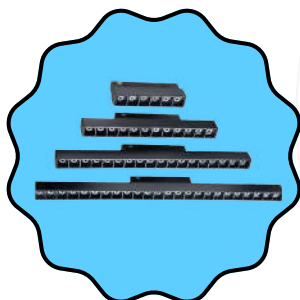
• Code - 6WMALISPCW00

Note:

- ✓ Easily Replaceable Lights – Swap and reposition fixtures effortlessly for different areas.
- ✓ Premium Look & Feel – Enhances interiors with a rich and luxurious aesthetic.
- ✓ Modern Lighting Solution – Perfect for sleek, stylish, and innovative setups.
- ✓ Customizable & Flexible – Adaptable for various functional and decorative needs.
- ✓ Ideal for homes, offices, and commercial spaces seeking contemporary lighting.

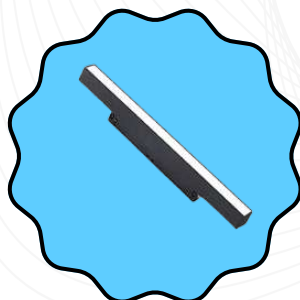
Why GLO LED Magnetic Track Lights?

- ✓ High-Quality LEDs & CREE COBs – Ensures superior brightness, efficiency, and longevity.
- ✓ Heavy-Duty Magnetic Profile – Built with high-quality copper for better conductivity and durability.
- ✓ 40-50% Lower Price – More affordable than market rates without compromising on quality.
- ✓ Free Consultations & Expert Installation Teams – Professional guidance and seamless setup.
- ✓ Reliable, modern, and cost-effective lighting solutions for homes and commercial spaces.



**MAGNETIC LINEAR
SPOT LIGHT 12W**

• Code - 12WMALISPCW00



**MAGNETIC PROFILE
LIGHT 12W**

• Code - 12WMAAPRCW00



**MAGNETIC PROFILE
LIGHT 24W**

• Code - 24WMAAPRCW00



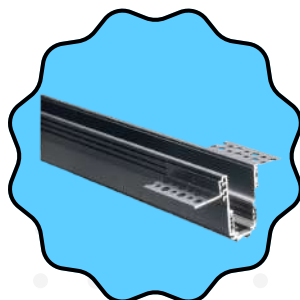
**MAGNETIC TRACK
LIGHT 12W**

• Code - 12WMATRCW00



**MAGNETIC TRACK
LIGHT 24W**

• Code - 24WMATRCW00



**MAGNETIC TRACK
CHANNEL RECESSED**

• Code - MTRE3MT00



**MAGNETIC TRACK
CHANNEL SURFACE**

• Code - SMTSU3MT00



GLOLED Down Lights

GLOLED Down Lights offer superior illumination, durability, and quality compared to conventional slim panels. Crafted with premium ADC 12 material, these lights feature high-end diffusers with a 0.8 mm thickness, and robust PCBs at 1.5 mm thickness, ensuring exceptional performance and longevity. Available wattages include 9W, 12W, 18W, 24W, and 36W in both round and square designs. These down lights provide IP33 protection and are offered in multiple colors—Cool White, Warm White, Natural White, 3-in-1 (multi-color), and tunable models for adjustable ambiance. Both surface-mounted and concealed options are available.

Applications

- Commercial Shops:*
Recommended wattages: 18W / 24W
- Function Halls:* Recommended wattages: 24W
- Corridors:* Recommended wattages: 9W, 12W, 18W
- IT Institutes & Offices:*
Recommended models: 2x2 panel lights, 18W



LED DOWN LIGHT 6" CUT - 18W
PRIME RO
• Code - 18WDOROCW6I00



LED DOWN LIGHT 6" CUT - 24W
PRIME RO
• Code - 24WDOROCW6I00

Note:

Choosing GLOLED Down Lights guarantees brighter spaces, lower power consumption, and substantial savings on energy bills compared to conventional slim panels. Trust GLOLED for reliable lighting solutions backed by exceptional service and quality assurance.



LED DOWN LIGHT 8" CUT - 36W
PRIME RO
• Code - 36WDOROCW8I00

Why GLO LED Dow lights?

- *Superior Illumination:* 140–150 lumens per watt ensures brighter and efficient lighting.
- *Energy Efficient:* Significantly reduces electricity bills compared to traditional slim panel lighting.
- *Durable Construction:* Made from ADC 12 material with premium diffusers and robust PCBs.
- *Safe & Shockproof:* Powder-coated finishing provides additional safety against electrical shocks.
- *Tunable & Backup Models:* Adjustable lighting solutions and backup options available at affordable prices.
- *Efficient Drivers:* High-quality drivers with efficiency of over 90% for optimal illumination.
- *Installation & After-Sales Service:* Comprehensive installation support and reliable service available beyond warranty periods.



GLOLED Fans

Celino Series: Available in sizes of 600mm and 900mm, these fans are tailored for different room dimensions, ensuring optimal airflow.

Jumbo: Engineered for maximum air delivery, making it suitable for larger spaces.

Glacier: Combines modern aesthetics with efficient performance.

Glide: Designed for smooth operation and consistent cooling.

Mink and Mink Plus: These models offer sleek designs coupled with energy-efficient technology.

Pedestal Fans: Portable and adjustable, ideal for targeted cooling in various settings.

Table Fans: Compact and versatile, perfect for personal use on desks or countertops.

Wall Fans: Space-saving solutions that provide effective air circulation in confined areas.

Exhaust Fans: Essential for maintaining ventilation in kitchens, bathrooms, and other enclosed spaces.

JAVA



BLDC PREMIUM
WITH REMOTE
CONTROL



SWEEP
AREA
1200 mm



AIR
DELIVERY
230 Cmm



MAX
RPM
400 mm



POWER
CONSUMPTION
32 Watts

Paired with modern contemporary style and impressive state-of-the-art design, the Java Fans crafted with wide aluminium blades will keep your home looking and feeling fresh all year around.

GREEN AIR



BLDC PREMIUM
WITH REMOTE
CONTROL



SWEEP
AREA
1200 mm



AIR
DELIVERY
230 Cmm



MAX
RPM
400 mm



POWER
CONSUMPTION
32 Watts

Paired with modern contemporary style and impressive state-of-the-art design, the Green Air Fans crafted with wide aluminum blades will keep your home looking and feeling fresh all year around.





POLYCAB WIRE - 1 SQ MM

- Code - POWI1S1C300BK00
- All Colors available



POLYCAB WIRE - 1.5 SQ MM

- Code - POWI15S1C90GR00
- All Colors available



POLYCAB WIRE - 2.5 SQ MM

- Code - POWI25S1C90BL00
- All Colors available



POLYCAB WIRE - 4 SQ MM

- Code - POWI4S1C90RE00
- All Colors available



POLYCAB WIRE - 6 SQ MM

- Code - POWI6S1C300YE00
- All Colors available

MCBS



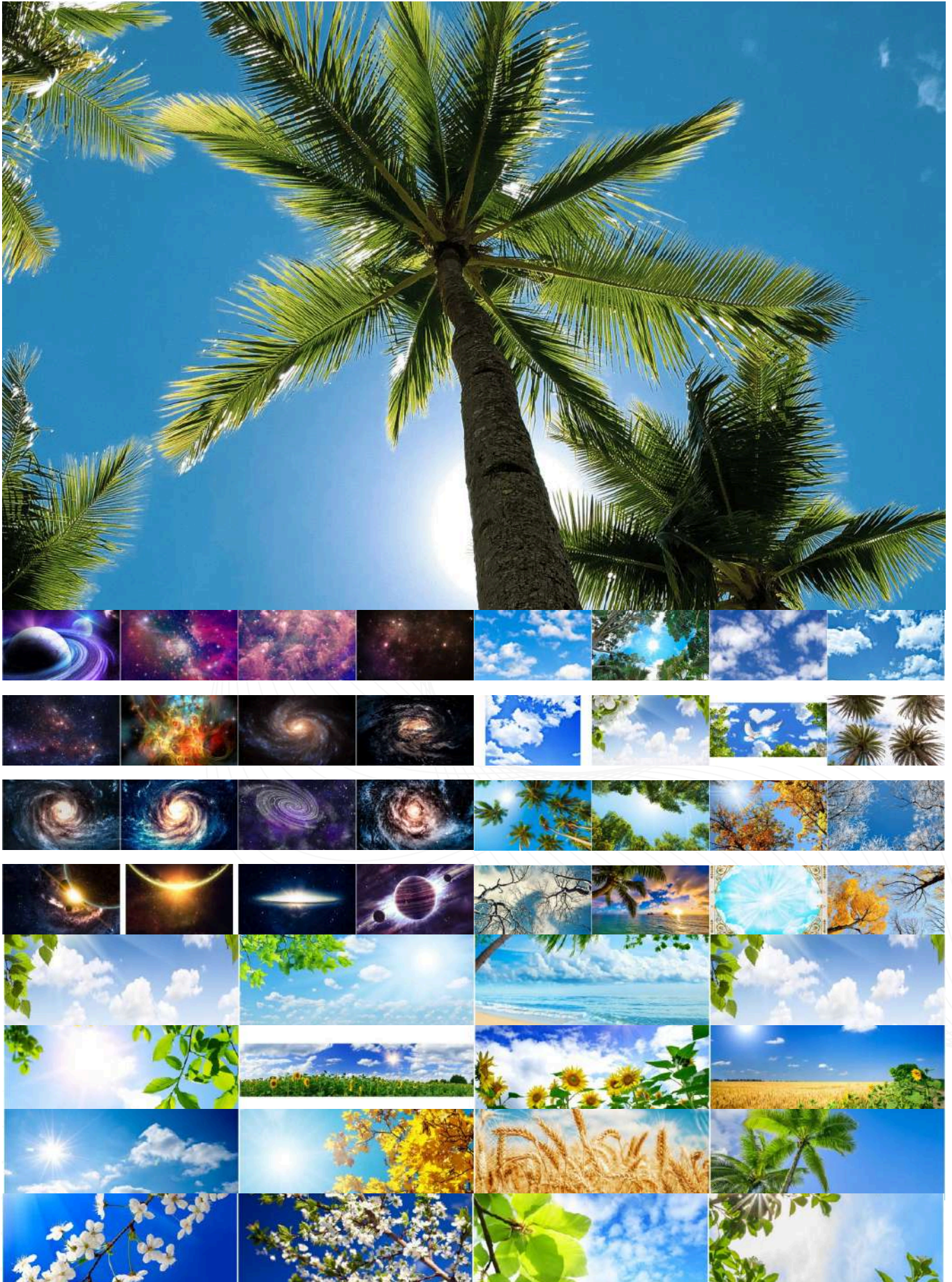
**ANCHOR ROMA 32A SP C UNO
DP MINI MODULAR MCB**

- Code - 98080



**ANCHOR ROMA 16A SP C UNO
SP MINI MODULAR MCB**

- Code - 98071





GLO LED Private Limited
Manufacturer & Solutions Provider

Exported to Dubai, Rwanda

Services Offered to :

Supplying across INDIA



SUBSCRIBE



FOLLOW



FOLLOW US ON



JOIN